

MRS. ROQUE

Science Class | Rm203 |

COURSE OVERVIEW

In our science class, we'll explore exciting topics across four major domains: **Nature of Science**, **Earth & Space**, **Life Science**, and **Physical Science**.

Learning will happen through hands-on **projects**, interactive **in-class stations**, and engaging **small group activities** that help you think like a scientist and work like a team. Get ready to investigate, experiment, and discover the world around you!

EXPECTATIONS

- 1 Be respectful to everyone and their ideas.
- 2 Come prepared with materials and a positive attitude.
- 3 Participate actively in discussions & activities.
- 4 Follow all school rules and classroom procedures.

GRADING POLICY

Your grade will be based on the following categories:

- Classwork and Participation: 15%
- Major Assignments: 35%
- Topic Quizzes Assignment: 20%
- Projects and Presentations: 25%
- Homework: 5%

LATE WORK POLICY

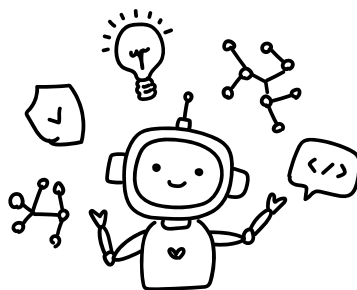
Learning is a process. My priority is your learning and growth, so focus on understanding the material rather than just submitting a final product. You are allowed to make up missing assignments as long as they are completed and turned in by the following class from when it was due. If emergency cases please talk to me directly.

SUPPLIES

- ☐ 5 subject notebook (**only for science**)
- ☐ Pen or pencil (**1 red pen**)
- ☐ Highlighters & Glue Sticks
- ☐ Loose lined paper

CLASS REDINESS POLICY

Students are expected to come to class **prepared every day** with all necessary materials (notebook, pencil, assignments, etc.). Being prepared is essential for participation in labs, stations, and group work. A **daily grade** will be given based on preparedness and readiness to learn. Cell phones are not allowed in class unless instructed to do so. All students are required to place in the assigned area.



MONTHLY SCIENCE PROJECT TOPICS

Theory vs Law

EMS/Light Behavior

Atoms/Elements

Stars

Weather/ Air Fronts

Law of
Superposition

Plate
tectonics/Rocks

Fossil Evidence/
Evolution

Plant Cells / Animal
Cells

CONTACT INFO

I am here to help you succeed! If you have questions or need extra support, feel free to reach out during class, after school, or **via remind**. I encourage parents and guardians to contact me with any concerns or questions.

email. mroque@coheaedu.com

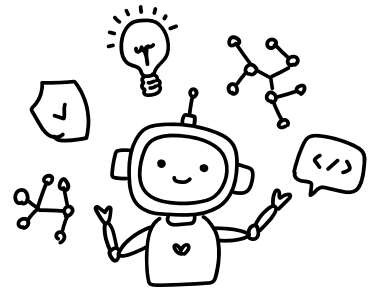
remind 101: Join in code : **ckaa4f**

BATHROOM USAGE

Bathroom should only be used in case of an emergency. You will be given bathroom passes that will be used as extra credit for students that do not use the bathroom in my class period.

TOPIC TESTS

At the conclusion of each instructional topic, students will complete a **Topic Test**, a formal multiple-choice assessment comprising of **10–15 questions**. These tests evaluate mastery of material covered in class lectures, Edpuzzle videos, and essential vocabulary. They are graded as quizzes and serve to confirm readiness before progressing a major unit test.



ASSIGNMENT RESOURCES/PROGRAMS

Florida Science
Cpalms

Science IXL

Googleclassrom

Edpuzzles

Generation Genius

Quizzez

WEEKLY ASSIGNEMNTS

You can access all weekly assignments in **Google Classroom** by clicking the **weekly** assignments tab, they are neatly organized by topics and weekly. Additionally, you'll receive a printed weekly packet that must be brought to every class, completed throughout the topic, and turned in as a whole at its conclusion for grading.

TEACHER CLASS DONATIONS





Syllabus Acknowledgment Summary

By signing below, both the student and parent/guardian acknowledge that they have read and understood the classroom rules, expectations, and procedures outlined in the syllabus. They agree to support a respectful, responsible, and productive learning environment and understand that students are expected to come to class prepared and follow all guidelines throughout the school year.

Student Name: _____ Signature: _____ Date: _____
Parent/Guardian Name: _____ Signature: _____ Date: _____